

Beachyhead Villa

6 Bedrooms/5 Bathrooms

(Sleeps 12 guests)

Bay View / Golf Course / Patio / Terrace

Plettenberg Bay, South Africa



Beachyhead Villa, located on Plettenberg Bay's famed millionaire's mile, is the newest acquisition to the stable of world renowned "Collection by Liz McGrath". Across the road from the beautiful Robberg beach and just 3 kilometres from the centre of town, this villa is ideally located and epitomizes the ultimate luxury in self-catering accommodation.

The 6-bedroomed villa is a study in modern design, incorporating clean lines, bleached wood and earthy tones. The bedrooms have been decorated in shades of crème and blues, with pale wooden floors underfoot.

The two large main bedrooms on the top floor have separate dressing areas and boast amazing ocean views from their balconies, whilst the two ground floor bedrooms each have their own private courtyards with wooden decks. They also have direct access to the outside patio and pool area. All rooms have under-floor heating and air-conditioning. The state of the art en-suite bathrooms offer large baths, walk-in showers, double vanity units and heated towel rails.

The open-plan living areas flow into each other, allowing for easy entertaining and access to the covered barbeque area and sundeck surrounding the swimming pool. Features include a gas fireplace in the living room, flat screen televisions, with DSTV and a fully equipped quality finished kitchen, the perfect place to conjure up a delicious meal.

A friendly, attentive house-keeper will take care of you during your stay and will prepare a sumptuous breakfast daily, which can be enjoyed either on the covered patio, or in the 10-seater dining room.

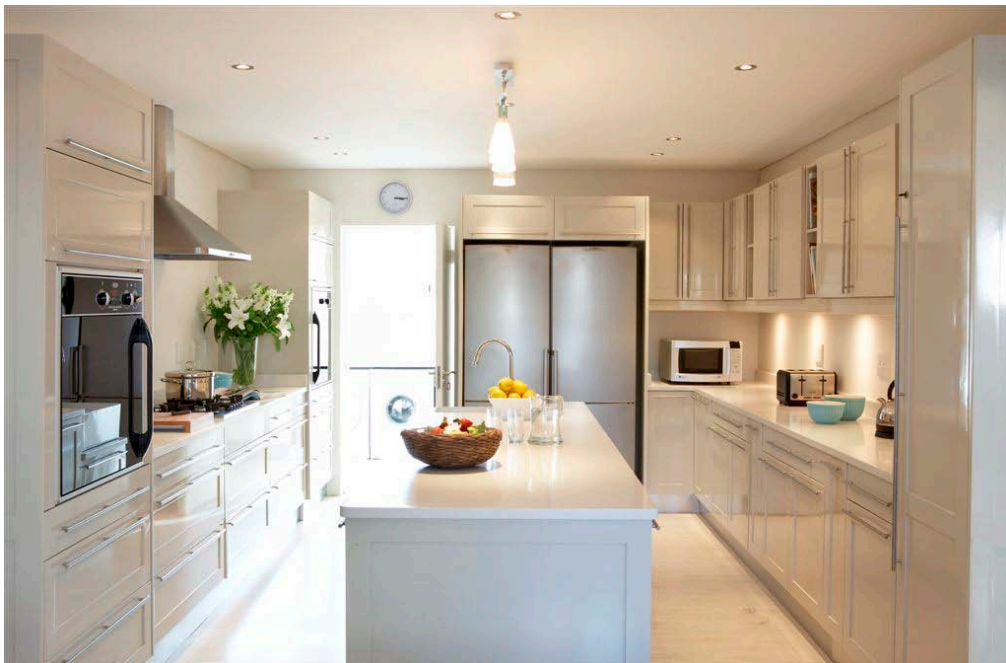
PHOTO GALLERY:



Living Area



Dining Area



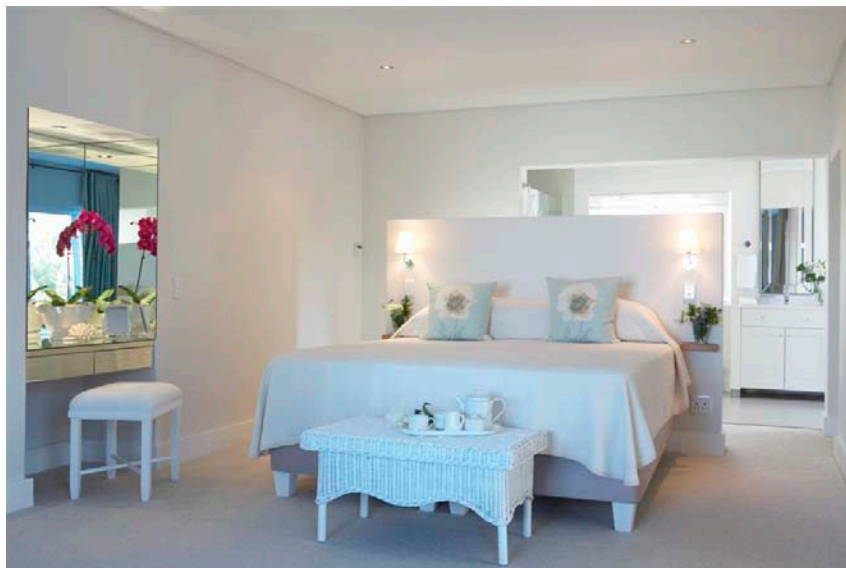
Gourmet Kitchen



Master Suite



Master Bathroom



Guest Suite II



Guest Suite III



Pool View

Rates: (all prices in South African Rand (ZAR) - visit www.XE.com for conversion)

Season	Rates per Night	Rates per Week	Rates per Month
High (January 1 - April 30, June 4 - July 18 & September 1 - December 31)	R25,000	R175,000	Inquire
Low (May 1 - June 3 & July 19 - August)	R15,000	R105,000	Inquire

****Check-In:** 1400h (2pm). **Check-Out:** 1100h (11am). Rates include 14% VAT, daily housekeeping and full English breakfast. Rates are subject to service charges and cleaning fees at time of booking. Children are welcomed. Please inquire about pets and smoking.

Please inquire if you require additional amenities included (i.e. car rental, chef hire, maid service, etc.).**

Note: Until confirmed, rates are subject to change without notice.