

The Contemporary Lodge

4 Bedrooms~4 Bathrooms

Lakefront

Cirencester, Cotswold, England



This Contemporary Lodge is an exceptionally large (270 square meters), 4 bedroom detached house (as featured in November 2009 Edition of "House and Garden" Magazine) offering full concierge facilities, available at extra cost, (hire a private jet or arrive via helicopter at the on-site helipad, or book a chef offering a master class in home cooked meals bespoke to you). The lodge is built on a private, stylish, boutique, luxury development, The Lakes by Yoo.

This brand new property offers an idyllic waterside location set in 650 acres of nature heaven, surrounded by six clear water lakes and established woodland.

This stunning contemporary detached eco property in this truly private community is a superb masterpiece created by a world renowned designer in partnership with an international design group - it makes the most of its location with full height southwest facing panoramic double glazing affording uninterrupted views from the edge of the lake. This is guaranteed to wow the fussiest and even the most hardened of luxury seekers.

Stylish eco lakeside living combines the tranquility of the beautiful Cotswold countryside with the very best of contemporary design in a truly remarkable location offering timeless elegance to those seeking dazzling lake views with absolute privacy to indulge their senses.

Chic, minimalist, simply elegant are words that describe this Modern Lodge. This is an oasis of luxury - quite simply one of the most magnificent sites ever built in the UK. It offers luxury living of the highest quality.

Sit peacefully by the serene waters from your very own veranda (16 meters long) with only the swans as companions. Enter this detached house via its own a private foot bridge and savor the truly magnificent lake views from every room.

Launch your private kayak and glide across the clear waters teeming with trout and crayfish, explore the collection of lakes shared by the resident otters and bankside deer. Or venture into the wooded 650 acres on foot or bike.

PHOTO GALLERY:



Living area with View



Dining Area



Gourmet Kitchen



Guest Suite



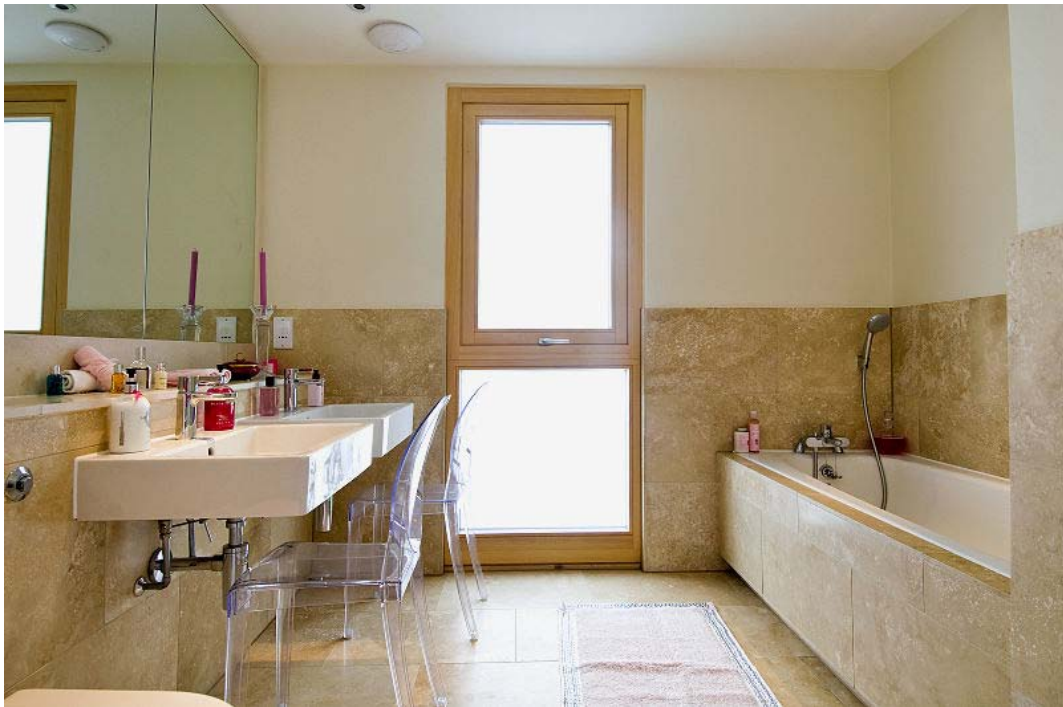
Guest Bath



Guest Suite II



Guest Suite III



Guest Bath II



Tiki Hut on Grouds



Path Around House



Outside Views

Season	Rates Per Week	Rates Per Month
Peak All of July, all of August, the first week of September, Xmas and New Year (week-stays only during this time)	£4,500	Inquire
High Easter holidays and May half term (week stays only)	£4,000	Inquire
Mid April, Feb half term (week stay only) and October half term (week stay only), May, June, September	£3,500	Inquire
Low (January, February (excluding half term) March, October (exec half term) November, December)	£3,000	Inquire
Bank Holidays (May Bank Holidays October 22 - 29 February 12 - 19)	£3,000	Inquire

NB: Prices may be subject to change at the advertiser's discretion. All prices based on 8 adults and 2 children. All the Bank holidays, Easter, summer holidays are in the High season period.

Prices include bed linen, towels, heating, pre-arrival and post departure cleaning and access to the heated outdoor pool, Techno Gym and Executive Club house from early May 2009.

Monday and Friday preferred for arrivals and departures, but other weekdays can be accommodated subject to negotiation.

500 returnable security deposit due 8 weeks prior to arrival. Insurance recommended