

Herefordshire Manor

11 Bedrooms/7 Bathrooms
Game Room/Gardens
Eardisland, Herefordshire, England



Steeped in history, this 11 bedroom 17th century Grade II listed manor house is certainly not stuck in the past. Located in Eardisland, one of Herefordshire's most picturesque Black and White villages, it seamlessly blends the grandeur of a country pile with all the comforts of modern living. Making it the perfect destination, whether you're planning a family reunion, a mid-week business meeting or a celebration for a special occasion.

From the baby grand piano and 42-inch flat screen television to the games barn, exquisitely finished kitchen and lovingly tended grounds, no detail has been overlooked. Nor any expense spared in ensuring that every guest's stay is as comfortable and pleasurable as possible. The result being a luxurious yet uncluttered homestead, where you can leave your worries behind and take away some great memories.

When we say that Herefordshire Manor can accommodate 22 adult guests, it's not at a squeeze. With 11 bedrooms, seven bathrooms, expansive communal rooms and an acre of grounds, even at capacity, it's still a luxurious and relaxing stay.

Each and every room has been finished to the very highest standards. In fact Herefordshire Manor is the byword for understated elegance. No detail has been forgotten, but you can find out more about exactly what awaits in the following pages.

The ground floor houses all the communal living and dining areas, and offers the perfect balance of privacy and togetherness. The Dining Room can seat up to 22, making it ideal for both celebratory dinners and daytime business discussions. Additionally there are the study, morning room and sitting room areas, should you want a smaller meeting space or just some quiet time.

With a 42-inch flat-screen television, surround sound cinema, baby grand piano and sumptuous seating for 30, the living room is perfect for more relaxed entertaining – especially with its wood-burning fireplace. The addition of Sky-Plus here and in the morning room – along with six other terrestrial televisions throughout the house – means you won't miss any of your favorite shows either. With wireless broadband, that goes for important emails too.

Experience also shows us that when families stay, happy children make for relaxed parents. So our younger guests are catered for with a good selection of toys, books, games, VCRs and DVDs. Although it should be said the Playstation 2 often grabs the attention of our older guests as much as the younger – especially the karaoke classic SingStar.

While the first thing you'll notice in the kitchen is its impressive Aga, rest assured it has everything else you could ask for. Essentials like a range cooker, fridge freezer, dishwasher and microwave are all luxuriously complimented with top-of-the-range fittings and granite work surfaces throughout. So it's ideal for master chefs and the culinary-challenged alike.

The size of the kitchen also enables it to offer a small informal eating area – or rather more simply somewhere for a quiet cup of tea or coffee. Additionally, for your convenience there's a washing machine and tumble dryer, located in the outside laundry room, along with an additional fridge freezer. Which can be especially handy if you're staying for more than a weekend.

Set in an acre of grounds on the banks of the River Arrow, The Manor House's exterior is every bit as special as its interior. In fact with its dovecote, large terrace, additional secluded seating areas and beautifully tended flowerbeds, it's the epitome of a traditional English country garden. A traditional English country garden with a few untraditional extras.

Along with two barbeques – one gas, one charcoal – there's a rather impressive games barn. With table tennis, air hockey, table football and a pool table, it's a great way to pass a few hours. It's not just great family entertainment though; plenty of our corporate guests have made use of the barn too. The pool tournaments, in particular, are renowned for their 'friendly' competitiveness.

Photo Gallery –



Sitting Room



Fireplace/Reading Area



Media Room



Formal Dining



Gourmet Kitchen



Guest Room 1



Guest Room 2



Guest Room 3



Guest Room 4



Guest Room 5



Guest Room 6



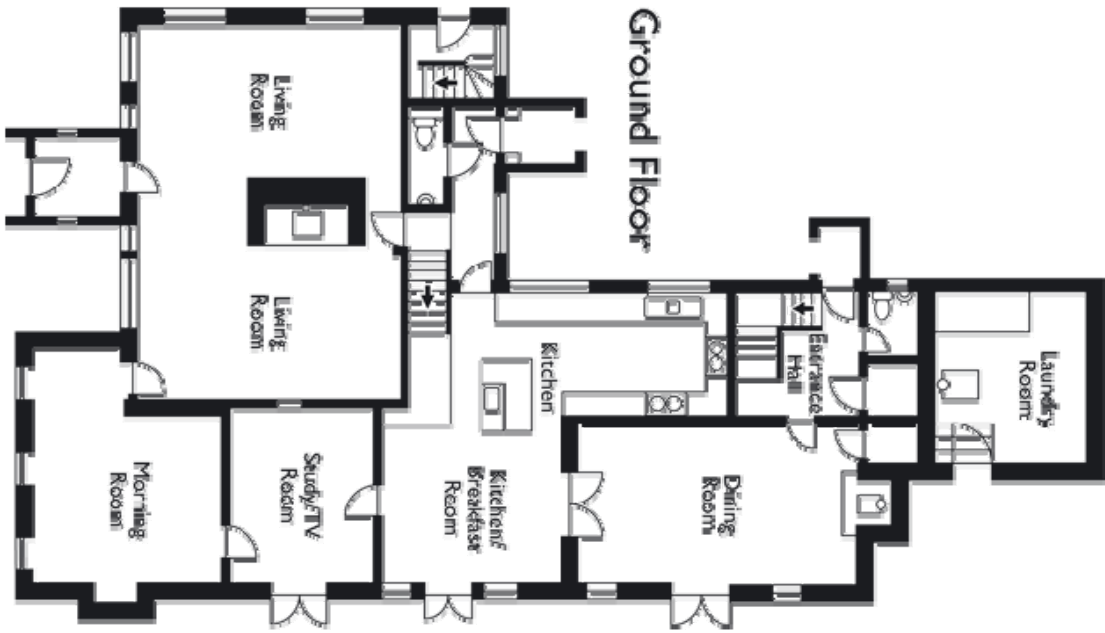
Guest Bath



Kitchen View



Layout



Layout II



Layout III

Rates: (in Sterling)

Dates	Accommodations	Rates Weekly
11/01/2006 - 05/01/2007 <i>7 nights min.</i>	11 Bedrooms (up to 22 people)	£4,800
05/01/2007 - 06/01/2007 <i>7 nights min.</i>	11 Bedrooms (up to 22 people)	£5,000
12/15/2007 - 01/01/2--8 <i>7 nights min.</i>	11 Bedrooms (up to 22 people)	Please Inquire
06/01/2007 - 09/01/2007 (High) Call for Holidays	11 Bedrooms (up to 22 people)	£6,800

Prices are Subject to VAT (taxes) and Security deposit (damage deposit). Rates are subject to change without notice so please inquire prior to booking.